

**Design 42074**  
**The Locklear**

**1 Story with 3 bedrooms & 2 total bathrooms**

Main Level Sq. Ft.: 1,635  
Total Finished Sq. Ft.: 1,635

Style: French Country  
Standard Foundation: Basement

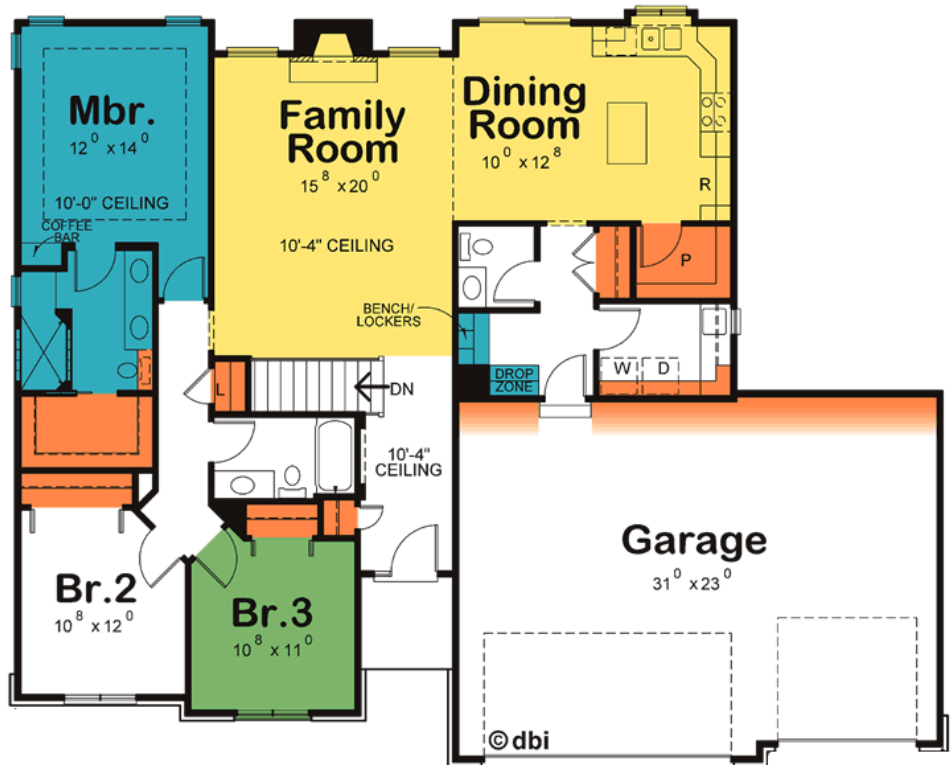
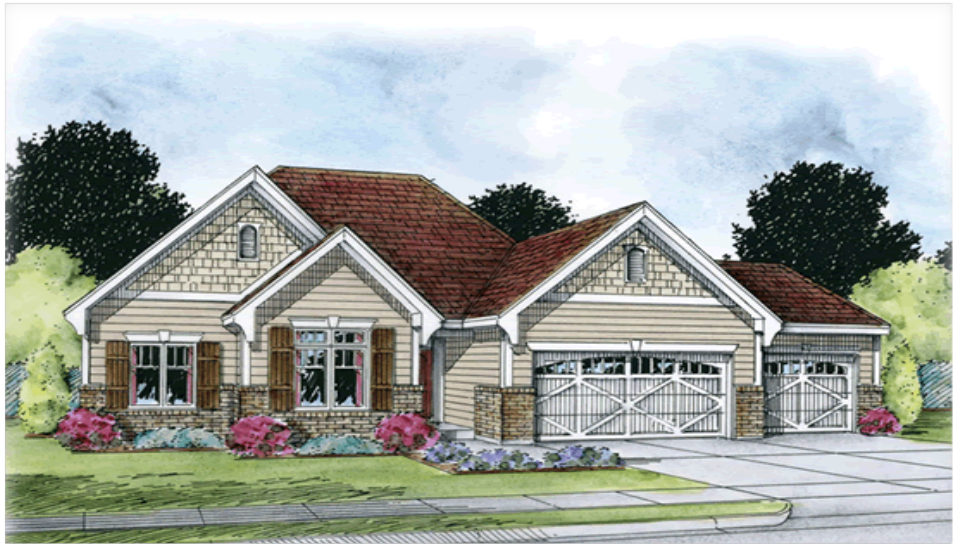
Max Width: 60'-0" Wide  
Max Depth: 48'-0" Deep  
Main Level Ceiling Ht: 9'0"  
Upper Level Ceiling Ht: 8'0"

Front Garage Size: 3 stalls  
Garage Sq. Ft.: 728

Kitchen Size: 9'-0" x 12'-8"  
Kitchen Island: 3'-0" x 4'-0"  
Breakfast Size: 10'-0" x 12'-8"

Master Suite Size: 12'-0" x 14'-0"  
Master Suite Closet Size: 8'-6" X 4'-8"  
Master Suite Bath Size: 8'-6" X 9'-0"

Laundry Size: 8'-6" x 10'-0"



ENTERTAINING	
DE-STRESSING	
STORING	
FLEXIBLE LIVING	

**Livability Index** <sup>SM</sup> | **33**

■ Entertaining 
 ■ De-Stressing 
 ■ Storing 
 ■ Flexible Living

**Plan Pricing**

**Your right to build documents:**  
Construction license only - \$433.00  
Dimensional plan - \$519.00

**Construction sets/drawings:**  
PDF electronic file full price - \$795.00  
1 set reproducible file full price - \$795.00  
4 sets reproducible file full price - \$870.00  
8 sets reproducible file full price - \$990.00  
CAD file full price - \$1,245.00

**Right reading reverse:**  
Available for this design. No Add. Cost



Scan the QR code to subscribe!